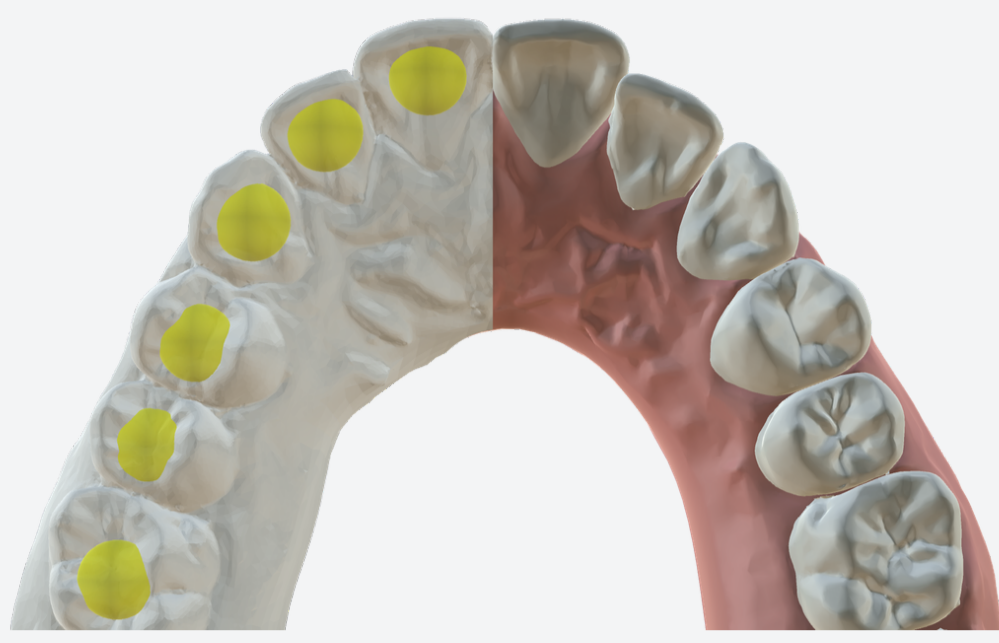


# ArchForm Software Features

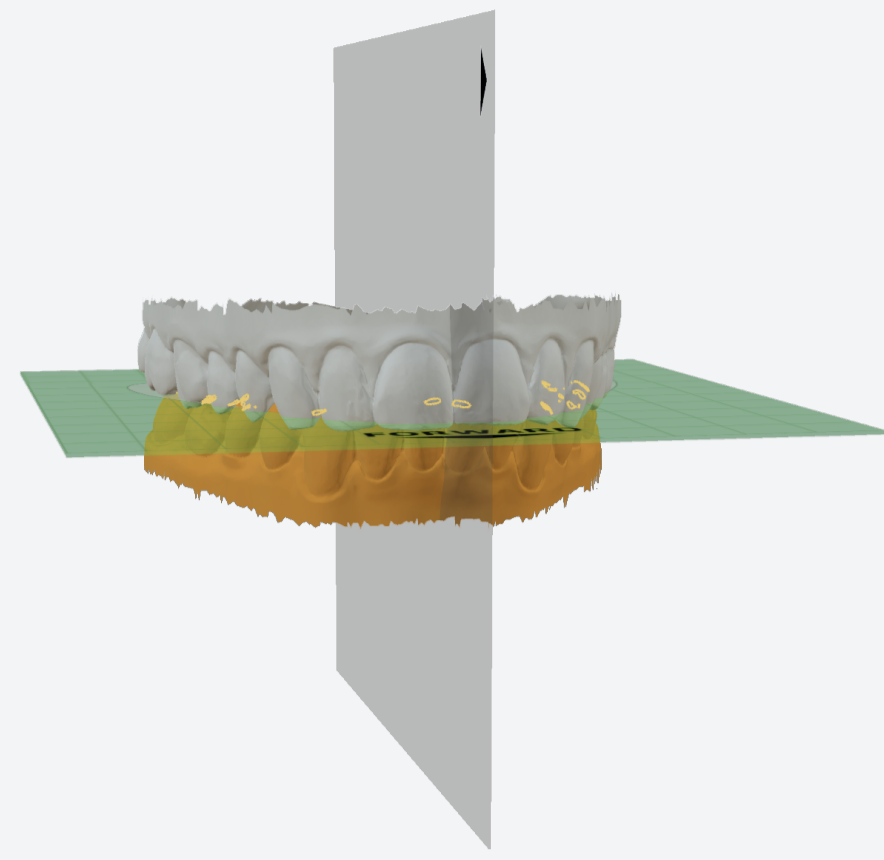
## Accurate segmentation

Our AI algorithm finds the gingival border of each tooth within 30 seconds. It's easy to manually adjust with our intuitive brush-editing feature.



## Auto-orientation

Scans in many different angles. ArchForm automatically aligns the midline and occlusal planes.



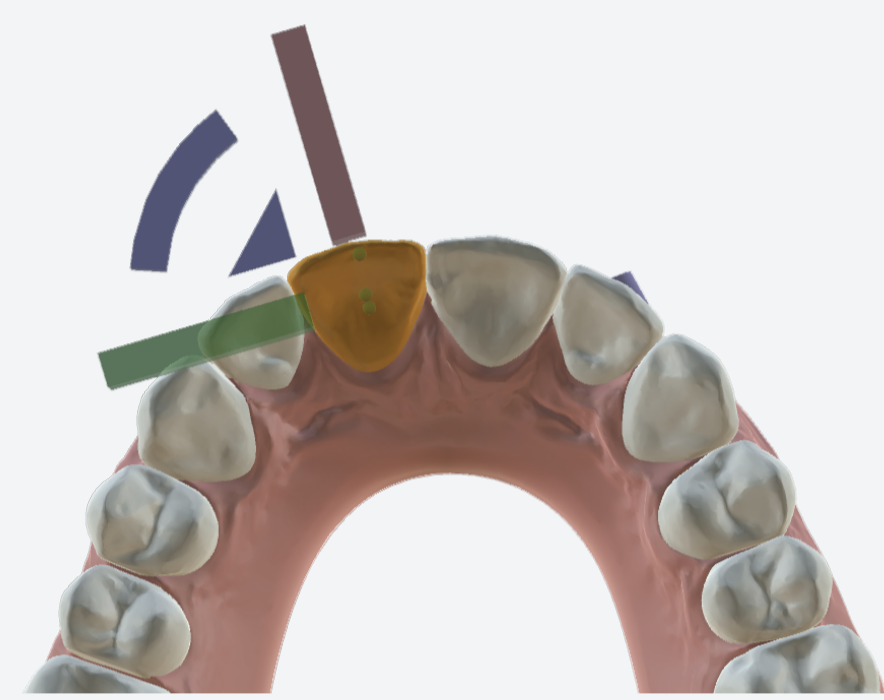
## Attachments

Complete attachment control lets you adjust position, add multiple attachments - including lingual attachments for root angulation, anchorage control, and space closure.



## Intuitive alignment

Easily drag teeth to where they need to be.



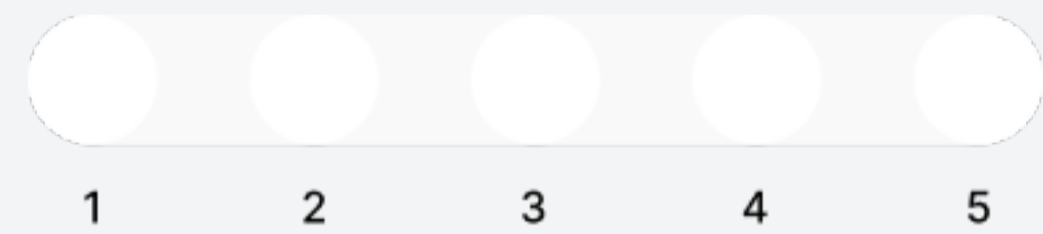
## Staging control

Set multiple intermediate goals to control the sequence of movements and apply overcorrection.



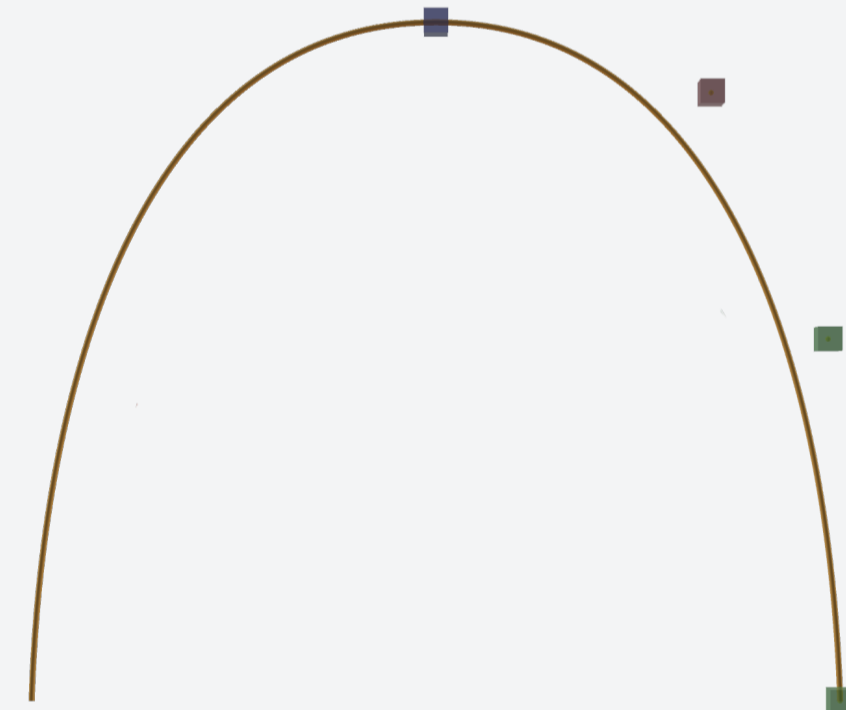
## Automatic number of aligners

The number of aligners changes dynamically based on tooth movements.



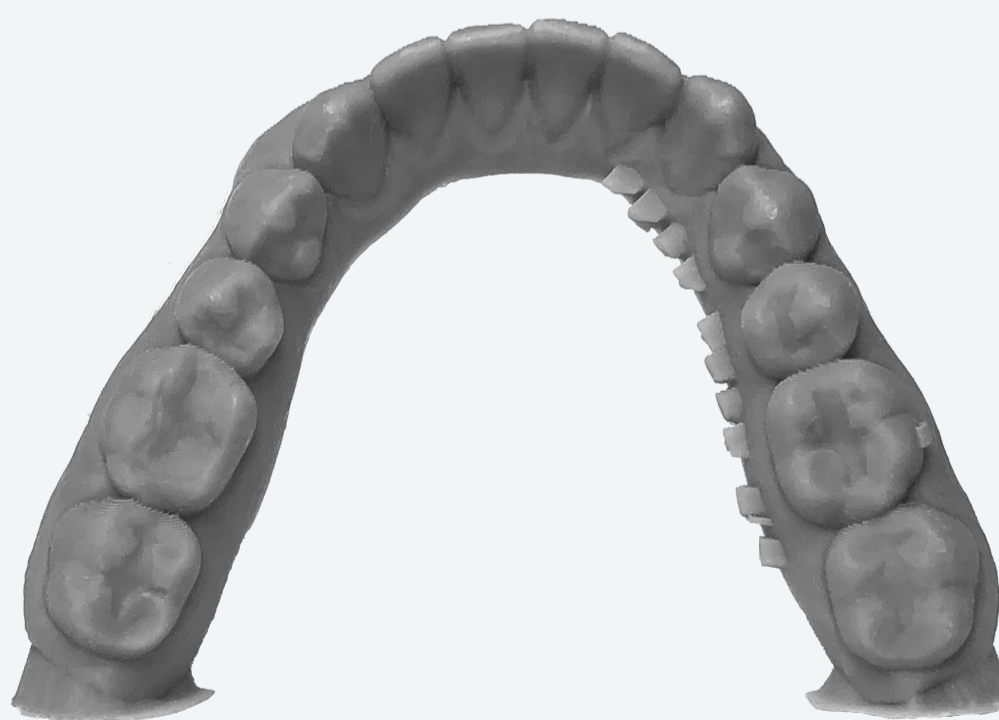
## Change shape of arch

Align the teeth to a customizable arch shape by adjusting the arch shape using the control points placed around it.



## Automatic prep for 3D printing

Everything you need to prepare your model for 3D printing is done for you, including adding supports for vertical printing, applying a label, preparing automatic hollowing, and applying our unique honeycomb support inside the hollow print.



## One click IPR adjustment

Change the exact IPR amount with a single click, and the teeth will automatically move—without manually moving each tooth.



## Sync across all your devices

Use ArchForm across multiple computers, and keep patient data in sync. For example, You can start a design on the office computer and continue it on your laptop at home

