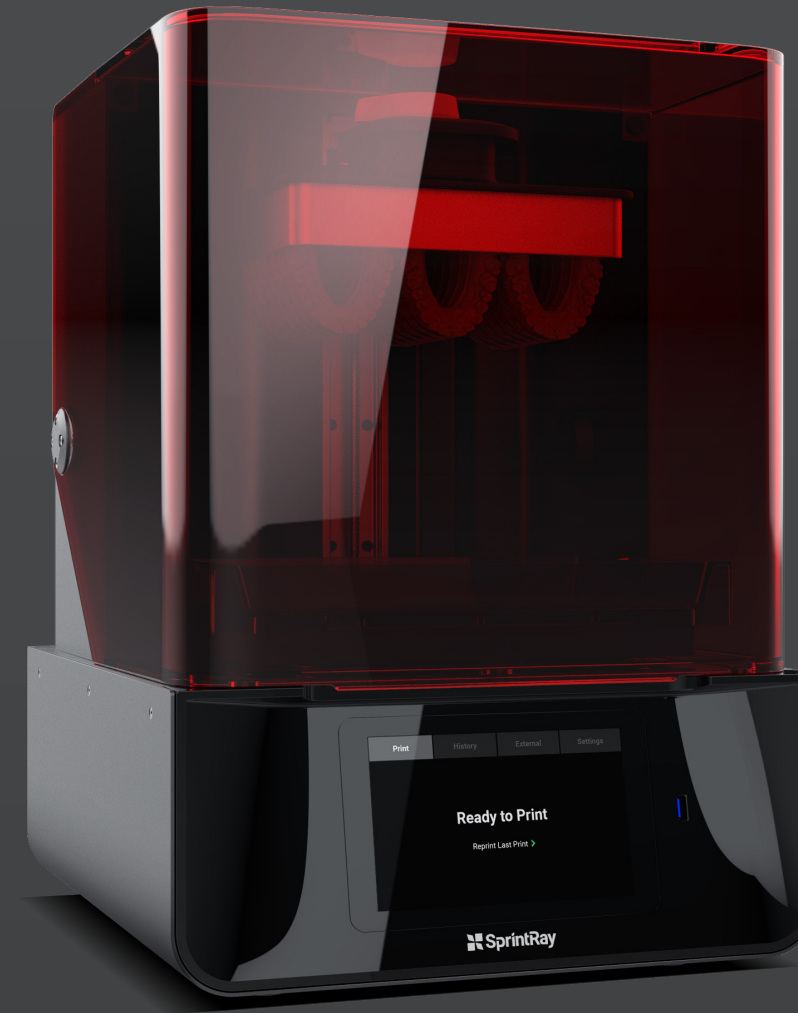


Competitive Analysis

SprintRay Pro 3D Printer



NextDent 5100



Key Benefits

- 2x build surface area
- Lower overall operating cost
- Support for 3rd-party resins
- One-click intraoral scan closing
- Cloud-connected printing

Build Volume	7.4 x 4.2 x 8 inches	4.9 x 2.8 x 7.7 inches
Print Surface Area	31 in ²	13.7 in ²
Print Speed	Up to 2 inches per hour	Up to 2 inches per hour
Minimum Feature Size	95µm	65µm
Resin Options	SprintRay, NextDent, Dentca, KeyStone	NextDent
Live Support	Phone setup consultation, free lifetime support	Live phone support
One-click Scan Repair	AI-driven scan closing and model basing	Not available
Onboard Computer	Contextual help, direct USB printing	Basic functionality
MSRP	\$ 6,750	\$9,990



Competitive Analysis

SprintRay Pro 3D Printer



Kulzer Cara 4.0



Key Benefits

- 3x build surface area
- Free live technical support
- Support for 3rd party resins
- One-click intraoral scan closing
- Cloud-connected printing

Build Volume	7.4 x 4.2 x 8 inches	4.1 x 2.3 x 5.1 inches
Print Surface Area	31 in ²	9.4 in ²
Print Speed	Up to 2 inches per hour	Up to 2 inches per hour
Minimum Feature Size	95µm	53µm
Resin Options	SprintRay, NextDent, Dentca, KeyStone	Dima
Live Support	Phone setup consultation, free lifetime support	Not available
One-click Scan Repair	AI-driven scan closing and model basing	Not available
Onboard Computer	Contextual help, direct USB printing	Basic functionality
MSRP	\$ 6,750	\$17,000



Competitive Analysis

SprintRay Pro 3D Printer



Planmeca Creo C5



Key Benefits

- 2.5x build surface area
- Long-lasting DLP printing system
- Resin-agnostic printing
- One-click intraoral scan closing
- Cloud-connected printing

Build Volume	7.4 x 4.2 x 8 inches	2.7 x 4.7 x 3.9 inches
Print Surface Area	31 in ²	12.2 in ²
Print Speed	Up to 2 inches per hour	Up to 2 inches per hour
Minimum Feature Size	95µm	50µm
Resin Options	SprintRay, NextDent, Dentca, KeyStone	Dreve (guide and model resins only)
Live Support	Phone setup consultation, free lifetime support	Not available
One-click Scan Repair	AI-driven scan closing and model basing	Available through C5 Studio software
Onboard Computer	Contextual help, direct USB printing	Basic functionality
MSRP	\$ 6,750	\$10,000

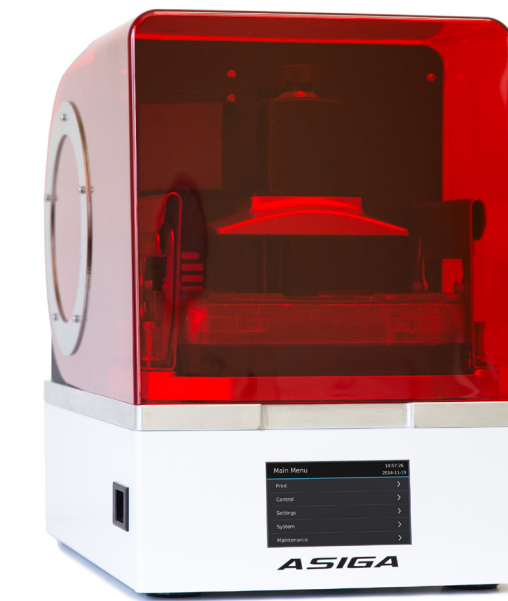


Competitive Analysis

SprintRay Pro 3D Printer



Asiga Max



Key Benefits

- 2.5x build surface area
- User-friendly software ecosystem
- Hassle-free resin presets
- One-click intraoral scan closing
- Cloud-connected printing

Build Volume	7.4 x 4.2 x 8 inches	4.6 x 2.6 x 2.9 inches
Print Surface Area	31 in ²	12 in ²
Print Speed	Up to 2 inches per hour	Up to 2 inches per hour
Minimum Feature Size	95µm	62µm
Resin Options	SprintRay, NextDent, Dentca, KeyStone	Open Standard
Live Support	Phone setup consultation, free lifetime support	Not available
One-click Scan Repair	AI-driven scan closing and model basing	Not available
Onboard Computer	Contextual help, direct USB printing	Basic functionality
MSRP	\$ 6,750	\$10,990



Competitive Analysis

SprintRay Pro 3D Printer



EnvisionTec Vida HD



Key Benefits

- 3x build surface area
- Free live technical support
- Support for 3rd party resins
- One-click intraoral scan closing
- Cloud-connected printing

Build Volume	7.4 x 4.2 x 8 inches	3.85 x 2.1 x 3.9 inches
Print Surface Area	31 in ²	8 in ²
Print Speed	Up to 2 inches per hour	Up to 2 inches per hour
Minimum Feature Size	95µm	50µm
Resin Options	SprintRay, NextDent, Dentca, KeyStone	Envisiontec
Live Support	Phone setup consultation, free lifetime support	Additional Cost
One-click Scan Repair	AI-driven scan closing and model basing	Not available
Onboard Computer	Contextual help, direct USB printing	Basic functionality
MSRP	\$ 6,750	\$30,000



Competitive Analysis

SprintRay Pro 3D Printer



EnvisionTec One



Key Benefits

- Free live technical support
- Support for 3rd party resins
- One-click intraoral scan closing
- Cloud-connected printing
- Future-proof 6-core computer

Build Volume	7.4 x 4.2 x 8 inches
Print Surface Area	31 in ²
Print Speed	Up to 2 inches per hour
Minimum Feature Size	95µm
Resin Options	SprintRay, NextDent, Dentca, KeyStone
Live Support	Phone setup consultation, free lifetime support
One-click Scan Repair	AI-driven scan closing and model basing
Onboard Computer	Contextual help, direct USB printing
MSRP	\$ 6,750

7.1 x 4.0 x 6.9 inches

28.4 in²

Up to 2 inches per hour

67µm

Envisiontec

Additional Cost

Not available

Basic functionality

\$15,000



Competitive Analysis

SprintRay Pro 3D Printer



Voco Solflex 170



Key Benefits

- Over 3x build surface area
- Onboard help instruction videos
- Support for 3rd Party resins
- One-click intraoral scan closing
- Cloud-connected printing

Build Volume	7.4 x 4.2 x 8 inches	2.2 x 3.5 x 4.7 inches
Print Surface Area	31 in ²	7.7 in ²
Print Speed	Up to 2 inches per hour	Up to 2 inches per hour
Minimum Feature Size	95µm	70µm
Resin Options	SprintRay, NextDent, Dentca, KeyStone	Open Standard
Live Support	Phone setup consultation, free lifetime support	Additional Cost
One-click Scan Repair	AI-driven scan closing and model basing	Not available
Onboard Computer	Contextual help, direct USB printing	Basic functionality
MSRP	\$ 6,750	\$15,000

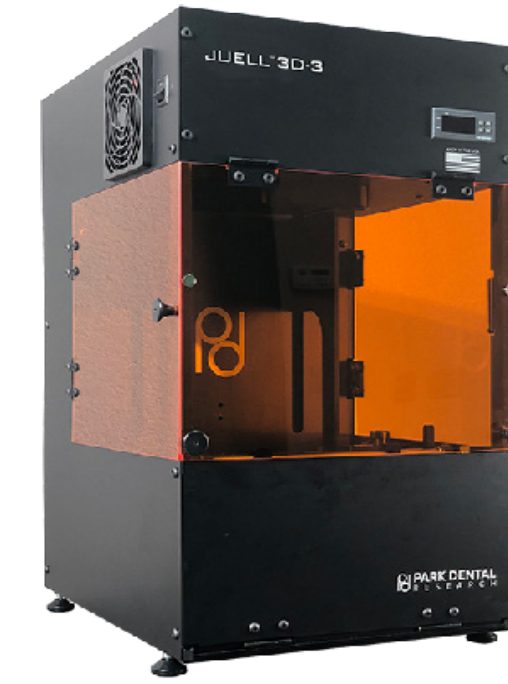


Competitive Analysis

SprintRay Pro 3D Printer



Juell 3D - 3



Key Benefits

- Smaller desktop footprint
- Up to 50% faster print speeds
- Support for 3rd party resins
- One-click intraoral scan closing
- Onboard computer with contextual help

Build Volume	7.4 x 4.2 x 8 inches	7.25 x 4.25 x 9 inches
Print Surface Area	31 in ²	31 in ²
Print Speed	Up to 2 inches per hour	Up to 1.4 inches per hour
Minimum Feature Size	95µm	50µm
Resin Options	SprintRay, NextDent, Dentca, KeyStone	Juell
Live Support	Phone setup consultation, free lifetime support	Additional Cost
One-click Scan Repair	AI-driven scan closing and model basing	Not available
Onboard Computer	Contextual help, direct USB printing	Not available
MSRP	\$ 6,750	\$5,950



Competitive Analysis

SprintRay Pro 3D Printer

Key Benefits

- Simultaneous prints don't affect speed
- Up to 13x maximum throughput
- Support for 3rd-party resins
- One-click intraoral scan closing



Build Volume	7.4 x 4.2 x 8 inches
Print Surface Area	31 in ²
Print Speed	Up to 2 inches per hour
Minimum Feature Size	95µm
Resin Options	SprintRay, NextDent, Dentca, KeyStone
Live Support	Phone setup consultation, free lifetime support
One-click Scan Repair	AI-driven scan closing and model basing
Onboard Computer	Contextual help, direct USB printing
MSRP	\$ 6,750

Form 3



Build Volume	5.7 x 5.7 x 7.2 inches
Print Surface Area	35.2 in ²
Print Speed	0.15 inches per hour*
Minimum Feature Size	85µm
Resin Options	FormLabs
Live Support	\$250 per year
One-click Scan Repair	Not available
Onboard Computer	Basic functionality
MSRP	\$3,500

*speeds for laser-SLA printers fluctuate greatly depending on the number of models per print job

Competitive Analysis

SprintRay Pro 3D Printer



Key Benefits

- Simultaneous prints don't affect speed
- Up to 13x maximum throughput
- Support for 3rd-party resins
- One-click intraoral scan closing



Build Volume	7.4 x 4.2 x 8 inches
Print Surface Area	31 in ²
Print Speed	Up to 2 inches per hour
Minimum Feature Size	95µm
Resin Options	SprintRay, NextDent, Dentca, KeyStone
Live Support	Phone setup consultation, free lifetime support
One-click Scan Repair	AI-driven scan closing and model basing
Onboard Computer	Contextual help, direct USB printing
MSRP	\$ 6,750

Form 3B



5.7 x 5.7 x 7.2 inches

35.2 in²

0.15 - 1 inch per hour*

85µm

FormLabs

1 year included, paid thereafter

Not available

Basic functionality

\$4,999

*speeds for laser-SLA printers fluctuate greatly depending on the number of models per print job

Competitive Analysis

SprintRay Pro 3D Printer

Key Benefits

- Intuitive printer and software interface
- Long-lasting DLP projector
- No need to replace light source
- 7" touchscreen with contextual help
- Powerful onboard 6-core CPU



Uniz Slash Plus



Build Volume	7.4 x 4.2 x 8 inches	7.5 x 4.7 x 7.8 inches
Print Surface Area	31 in ²	35.25 in ²
Print Speed	Up to 2 inches per hour	Up to 2 inches per hour*
Minimum Feature Size	95µm	75µm
Resin Options	SprintRay, NextDent, Dentca, KeyStone	Uniz
Live Support	Phone setup consultation, free lifetime support	\$500 per year
One-click Scan Repair	AI-driven scan closing and model basing	Not available
Onboard Computer	Contextual help, direct USB printing	Not available
MSRP	\$ 6,750	\$2,849

*at 100-micron layer thickness

Competitive Analysis

SprintRay Pro 3D Printer

Key Benefits

- 2x platform size
- Up to 2x faster
- 6x more throughput
- 7" touchscreen with contextual help
- Powerful onboard 6-core CPU



MoonRay S



Build Volume	7.4 x 4.2 x 8 inches	5.3 x 3.2 x 8 inches
Print Surface Area	31 in ²	17 in ²
Print Speed	Up to 2 inches per hour	Up to 1 inch per hour
Minimum Feature Size	95µm	100µm
Resin Options	SprintRay, NextDent, Dentca, KeyStone	SprintRay, NextDent, Dencta, Dreve
Live Support	Phone setup consultation, free lifetime support	Phone setup consultation, free lifetime support
One-click Scan Repair	AI-driven scan closing and model basing	AI-driven scan closing and model basing
Onboard Computer	Contextual help, direct USB printing	Not available
MSRP	\$ 6,750	\$4,430

Competitive Analysis

SprintRay Pro 3D Printer

Key Benefits

- 3x platform size
- Up to 2x faster
- 6x more throughput
- 7" touchscreen with contextual help
- Powerful onboard 6-core CPU



MoonRay D



Build Volume	7.4 x 4.2 x 8 inches	3.7 x 2.3 x 8 inches
Print Surface Area	31 in ²	8.5 in ²
Print Speed	Up to 2 inches per hour	Up to 1 inch per hour
Minimum Feature Size	95µm	75µm
Resin Options	SprintRay, NextDent, Dentca, KeyStone	SprintRay, NextDent, Dentca, Dreve
Live Support	Phone setup consultation, free lifetime support	Phone setup consultation, free lifetime support
One-click Scan Repair	AI-driven scan closing and model basing	AI-driven scan closing and model basing
Onboard Computer	Contextual help, direct USB printing	Not available
MSRP	\$ 6,750	\$4,430