

3D Printing Solutions For **Orthodontics**



FORM 3BL

The New Standard for High Volume 3D Printing

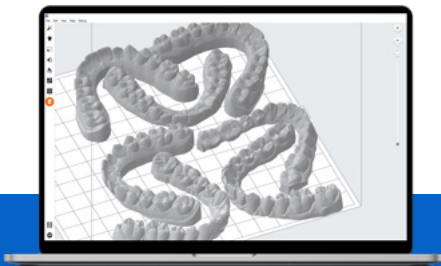
The Form 3BL is the large format 3D printer that raises the bar for dependable high-production printing, designed to work day and night with minimal intervention.



FORM 3B

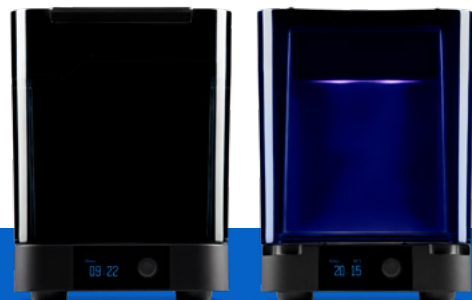
Continuous Throughput You Can Rely On

An easy-to-use and fast solution for your orthodontic practice or lab to produce aligners and retainers in-house with little initial investment.



PREFORM AND DASHBOARD

Free, Powerful Software That's
Easy to Learn



FORM WASH AND FORM CURE

Automated Post-Processing Saves
Time and Effort

Clear Aligner and Retainer Models

Make your own appliances for only \$2-3 USD per model



PRINTED FLAT ON FORM 3B

Up to 8 models per print in 1 hr



PRINTED FLAT ON FORM 3BL

Up to 24 models per print in 2.5 hrs



PRINTED VERTICALLY ON FORM 3B

Up to 18 models per print in 5.5 hrs



PRINTED VERTICALLY ON FORM 3BL

Up to 52 models per print in 10 hrs

Direct-Printed Biocompatible Appliances



Occlusal Splints

\$4-5 USD per splint
Up to 6 splints per print in 4 hrs



Indirect Bonding Trays

~ \$6 USD per tray
Up to 6 trays per print in 2 hrs

Print times and throughput figures are given for Form 3B and may change with future updates.

Please note that workflows using biocompatible resins may not be available in all regions. Ask a sales representative about availability in your region.