



Less than 45 in of table space required

World First FDA Class II 510 (k) Direct Print Clear Aligner



iLux Pro Dental 3D Printing Solution

LuxCreo's iLux Pro Dental is a desktop DLP 3D printer that offers high performance functionality with industrial-grade resolution and printing speed, which is ideal for rapid printing of dental industry.

Equipped with LEAP™ platform, LuxCreo has developed resin materials for orthodontic appliances, such as dental models, splint / night guard, retainer and clear aligner of high resolution, superb transparency yet low cost. iLux Pro Dental is also compatible with third party resins to meet various printing requirements of dental industry.

iLux Pro Dental is connected to LuxCreo's software ecosystem to realize smart operations, such as lightweight design, high-speed slicing, device interconnection and smart factory management.

A Complete, Tailored Integrated, Workflow



Optimized
materials

Simple, automated
software

• SYSTEM SPECIFICATIONS

Build Volume (XYZ)	192 x 108 x 200 mm (7.6 x 4.3 x 7.9 in)
Pixel Pitch (XY)	50 μm
Wavelength	385 nm
3D Printer Uncrated (WxDxH)	457 x 551 x 551 mm (18 x 21.7 x 21.7 in)
3D Printer Door Open (WxDxH)	457 x 583 x 698 mm (18 x 23 x 27.5 in)
3D Printer Uncrated Weight	35.5 kg (78.3 lbs)
Certifications	FCC, CE, UL
Warranty	12 months manufacturer's warranty included Extended warranty options available

• MATERIALS

Compatible Materials	SpeedSmile Denture Base, SpeedSmile Denture Teeth DNG Soft, DNG Hard, DMR, DSG, DCA KeySplint Soft, Keystone IBT Drevo FotoDent Guide, Drevo FotoDent Gingiva, Drevo FotoDent Tray2
----------------------	--

• SOFTWARE AND NETWORK

Software	LuxFlow, LuxDesign
Connectivity	USB / Ethernet / WiFi

Digital Polishing™

Digital Polishing™ is a revolutionary LuxCreo solution, enabling incredibly clear appliances direct from the printer without the manual polishing required from competing solutions.



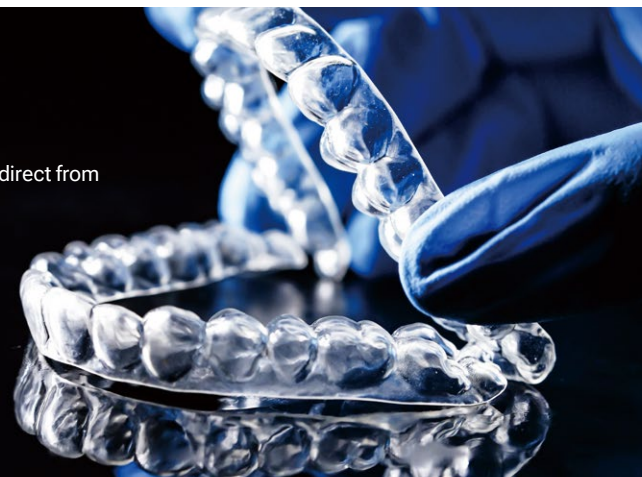
3x
Revenue with
same workforce



80%
Higher clarity



75%
Reduction in
polishing time





LuxCreo Resins



Splint **DNG Hard & DNG Soft**



Aligner / Retainer **DCA**



Surgical Guide **DSG**



Dental Model **DMR III**



Restoration **DMR III**



Denture Teeth **SpeedSmile Denture Teeth**



Denture Base **SpeedSmile Denture Base**



Available 3rd Party Resins



Impression Tray **Fotodent Tray2**



Gingiva **Fotodent Gingiva**



Surgical Guide **Fotodent Guide**



Indirect Bonding Tray **Fotodent IBT**



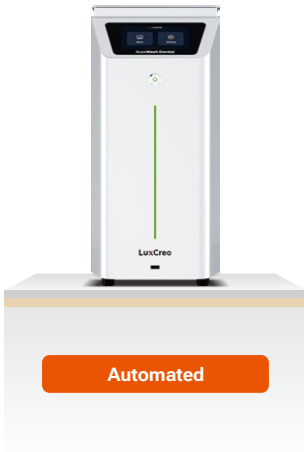
Indirect Bonding Tray **Keyortho IBT**



Crown&Bridge **FREEPRINT[®] temp**



iLuxWash Dental



iLuxWash Dental enhances the ultrasonic cleaning process by adding a magnetic-driven impeller stirring function. This rapidly agitates the cleaning solution during ultrasonic cleaning while also featuring a heating function, making it more effective in removing residual resin from printed parts.

Driven by a focus on improving user experience, the fully-automatic intelligent operating system enables unattended and automatic operations. This helps prevent distortion issues that may arise from over-soaking printed parts, making iLuxWash Dental the best choice in the dental and medical fields.

• SYSTEM SPECIFICATIONS

Washing Volume(XYZ)	158 x 158 x 148 mm(6.2 x 6.2 x 5.8 in)
Exterior Dimension Uncrated	200 x 488 x 418 mm(7.9 x 19.2 x 16.5 in)
Exterior Dimension Crated	335 x 615 x 525 mm(13.2 x 24.2 x 20.7 in)
Uncrated Weight	21 kg(46.3 lbs)
Crated Weight	25.5 kg(56.2 lbs)
Heating Temperature	≤60°C

• SUGGESTED OPERATING ENVIRONMENT

Temperature	22-32 °C (72-90 °F)
Humidity (RH)	<80%
Power Requirement	100-120 VAC, 50/60 Hz, 600 W 200-240 VAC, 50/60 Hz, 600 W



LuxFresh Detergent

LuxFresh is a non-IPA wash detergent for the iLuxWash Dental. LuxFresh can be heated for superior cleaning, compared to IPA, and is more office-friendly with higher reusability, low odor, and is non-flammable. The one-touch operation is completed in less than 15 minutes when used with iLuxWash Dental."



iLuxCure Pro



iLuxCure Pro offers best user experience and convenience by providing unique upward and downward high intensity lighting, heating function and 360° curing coverage. It is ideal for dental and medical, industrial and R&D applications.

• SYSTEM SPECIFICATIONS

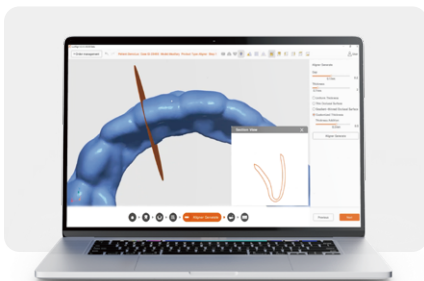
Curing Volume (XYZ)	Φ200 x 200 mm (Φ7.9 x 7.9 in)
Exterior Dimensions Uncrated	320 x 361 x 460 mm (12.6 x 14.2 x 18.1 in)
Uncrated Weight	20 kg (44.1 lbs)
Wavelength	405 + 385 nm
Uniformity	≥ 95% w/ turntable
Heating Temperature	≤ 60°C (140 °F)

• SUGGESTED OPERATING ENVIRONMENT

Temperature	22-32 °C (72-90 °F)
Humidity (RH)	< 80%
Input Voltage	AC 100-120V, 50/60Hz, 9A AC 200-240V, 50/60Hz, 4.5A



LuxDesign

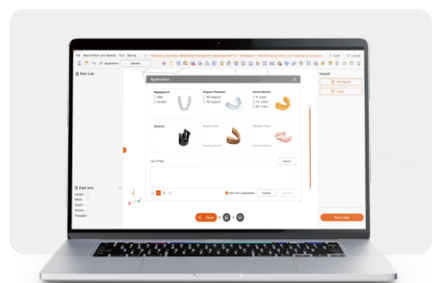


LuxDesign enables automatic aligner/retainer shell model generation process; LuxDesign helps orthodontists and dentists easily transfer from dental model design to clear aligner/retainer design. Together with the printing software LuxFlow which has functions specially developed for dental, users can finish the design smoothly and send to dental desktop printers for direct printing.

Ask us about our treatment capabilities.

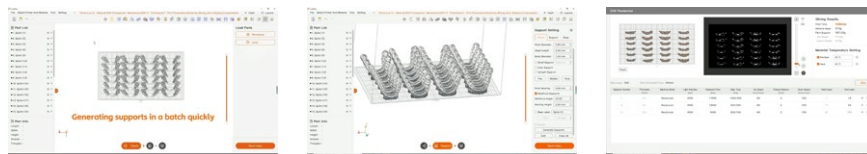


LuxFlow Dental

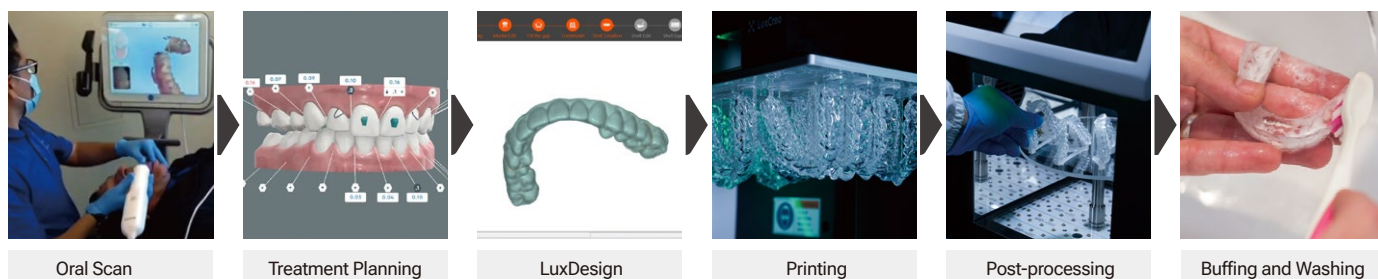


LuxFlow is an automated software featuring highly customized functions including model processing, supports, generating, and slicing for different dental models.

Compared with other pre-processing software, LuxFlow is featured with its customized functions for targeted industries such as dental, footwear, eyewear, and elastic printing. Based on the technical knowhow from mass production of different applications, LuxFlow serves as the best tool to prepare your 3D model in less time, with less material and higher printing success rate.



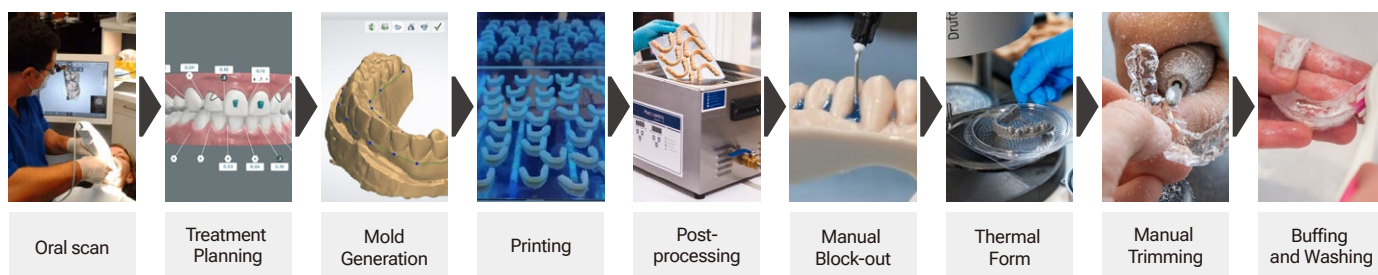
Direct Print Aligner and Retainer Workflow



Total Active Labor Per Aligner

1.5 min

Traditional Thermoformed Workflow



Total Active Labor Per Aligner

5.5 min

10x* Labor Productivity

3-10x Grow your business* with same workforce!

**Compared to manual aligner production and manual polishing*

North America Headquarter

+1 (650) 336-0888 / info@luxcreo.com

www.LuxCreo.com

940 Old County Rd., Belmont, CA 94002, U.S.A.

