



# WORLD'S FASTEST DENTAL 3D PRINTER



World's Fastest Dental Printing Solutions



**WORLD RECORD SPEED**  
6 full arches in 5 minutes



**STATE-OF-ART ACCURACY**  
 $\pm 50\mu\text{m}$ , up to 95.05%  
 $\pm 100\mu\text{m}$ , up to 99.6%



**OPEN MATERIAL SYSTEM**  
100+ dental resin compatible



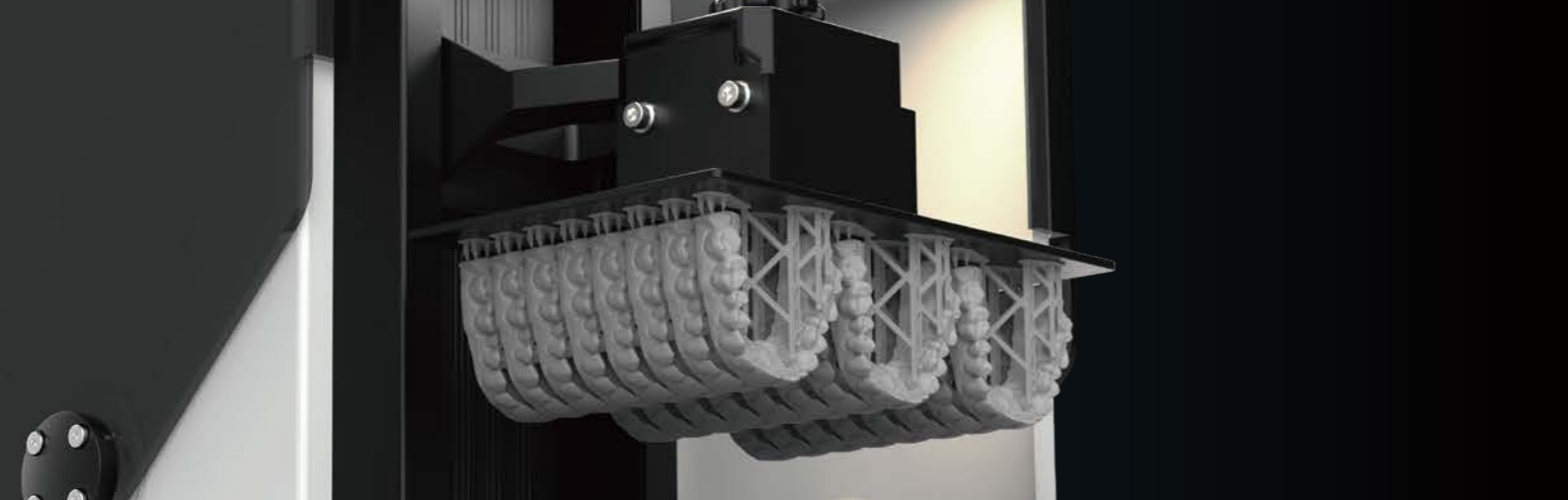
UNIZ TECHNOLOGY LLC

[www.uniz.com](http://www.uniz.com)

9400 Activity Rd Ste L

[sales@uniz.com](mailto:sales@uniz.com)

San Diego, CA 92126, US



# Technical Specification

## Key Features



### Patented efficiency liquid-cooling system

Maintain printing temperature below 40°C



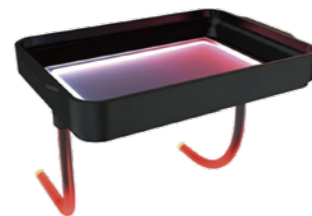
### Patented low force stereo peeling technology

Micro–stereo composite peeling structures



### Patented high power collimated light source

16 mW/cm<sup>2</sup> high power density, 95% uniformity



### Resin temperature control system

Maintain optimal reaction temperature

	DESCRIPTION	SPECIFICATION
PERFORMANCE	Printing Technology	LCD Stereo Lithography
	Build Volume	192 × 120 × 180 mm 7.5" × 4.7" × 7.1"
	XY Resolution	49.8 μm
	Maximum Accuracy*	±20 μm
	Layer Thickness (Z Resolution)	10–200 μm (50, 100 μm recommended)
	Separation Mechanism	Micro–stereo composite peeling structures
	Support	Uniz smart support technology
	Printing Speed**	6 full arches in 5 minutes
STRUCTURAL	Dimension / Weight	380 × 380 × 1230 mm [W×L×H] 15" × 15" × 49" 60 KG/132 LB
	Dimension/Weight (Including packaging)	490 × 490 × 1300 mm [W×L×H] 20" × 20" × 51" 65 KG/144 LB
	Operating Temperature	18–28° C (64–82° F)
	Power Requirement	110V/60Hz 6A 220V/50Hz 3A
	Optical System	4th Generation Collimated Light Source
	Mechanical	Cast Aluminum & CNC, Sheet Metal
	Connectivity	USB Flash Drive, Wi-Fi, Ethernet
	Control Pannel	7" Touch Screen
SOFTWARE	System Requirement	Windows 10 and up (64–bit only) Mac OS X 11.4 and up (64–bit only) 16GB RAM, OpenGL 2.1, Discrete Graphics
	Advanced Features	Built–in Advanced Model Repair, Dentist and Technician Friendly, Ultra Large File Support (1GB+)
	Slice Format	ZSLR
	Compatible Format	STL, OBJ, AMF, 3MF

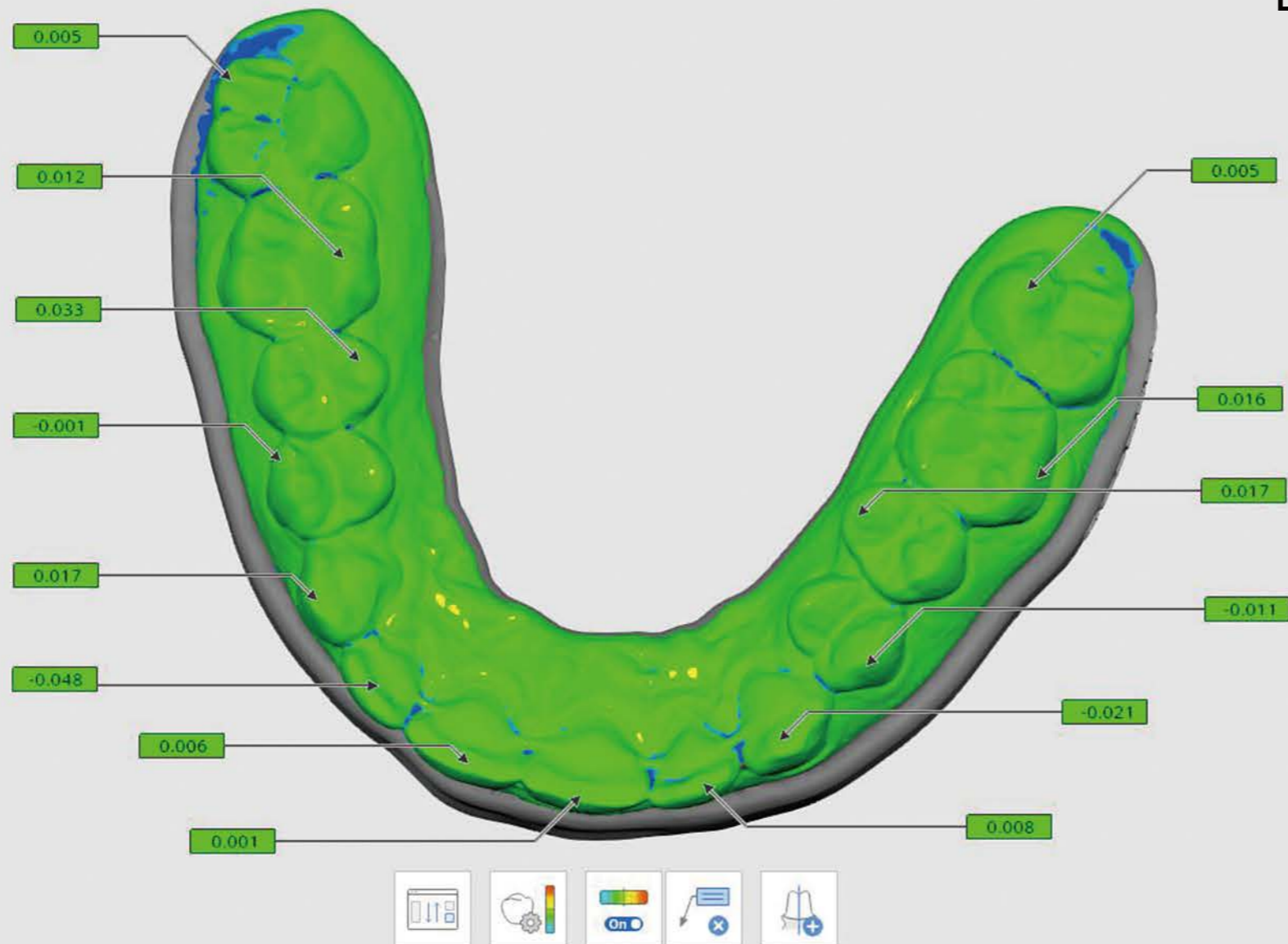
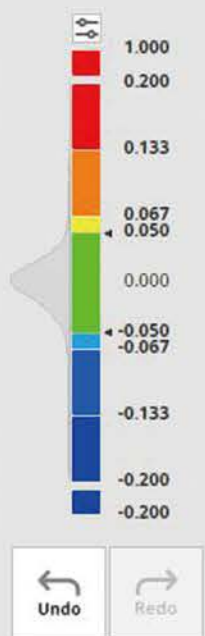
\* The indicators are obtained with specific testing models and may vary among different ones.

\*\* Speed achieved with 6 standard aligner models sliced at 100 microns.

# State-of-art Accuracy

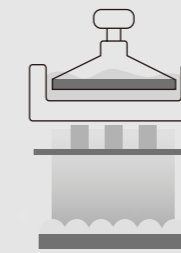
3D scans of full-arch models printed on NBEE show over 99.6% conformity within 100 microns and 95.05% conformity within 50 microns.

- Reference
- Sm\_arch\_upper\_aligne...
- Target
- dental model mit go3d...

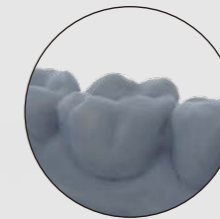


# Surface Smoothness

Best-in-class smoothness achieved with advanced anti-aliasing and blurring algorithm.



LCD



Up to Ra 6.3



# UNIZ DENTAL Design and Slicing Software



## Scan to Model

Convert 3D intraoral scans directly into printable dental models, simplifying your dental workflows.



## Auto Layout

Smarter layout algorithm that helps you arrange multiple models more easily and maximize the platform utilization.



## Easy Connectivity

Ethernet, Wi-Fi and USB connectivities.



## Automatic Supports

Smart automatic support-generation algorithms with powerful manual options.



## Open Material System

Open access to extensive third-party resins.

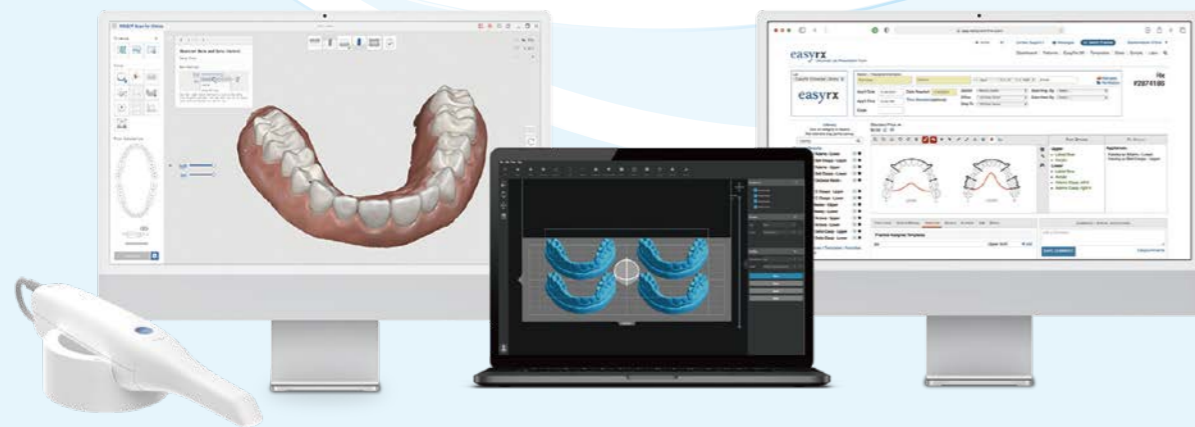
## In-depth Integration with Leading Design Software

3shape

MEDIT

exocad

easyrx



# Maximize ROI with NBEE

With its high accuracy, lightning-fast speed, the NBEE is a total game-changer for dental practices and labs looking to maximize their ROI.

Utilize our effortless and expeditious ROI Calculator to determine your 3D printing return on investment and payback period. This innovative tool facilitates the visualization of potential returns from implementing UNIZ's 3D printing solution.



Break-Even  
in just One Month



High Productivity



Business Growth



Ease of Use



Low Maintenance

# Certified Materials Library for Dental Needs

Covering most Polymeric Applications of Orthodontics, Prosthodontics and Implantation.



Orthodontics Model  
Cost Per Part: **\$2.32**  
Print Time: **5 mins/6 pcs**



**zDental Model Gray V2**

Customized Tray  
Cost Per Part: **\$6.70**  
Print Time: **12 mins/4 pcs**



**zDental Tray**

Surgical Guide  
Cost Per Part: **\$3.71**  
Print Time: **12 mins/4 pcs**



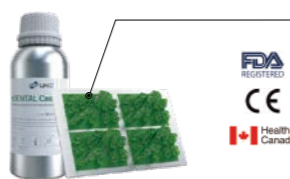
**zSG Clear**

Indirect Bonding Tray  
Cost Per Part: **\$3.95**  
Print Time: **18 mins/8 pcs**



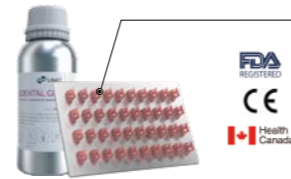
**zDental IDB**

Wax Crown & Bridge  
Cost Per Part: **\$0.44**  
Print Time: **14 mins/40 pcs**



**zDental Cast**

Gingiva Mask  
Cost Per Part: **\$0.35**  
Print Time: **10 mins/40 pcs**



**zDental Gingiva**

Clear Aligner  
Cost Per Part: **\$3.33**  
Print Time: **29 mins/8 pcs**



**Clear Aligner**

Crown  
Cost Per Part: **\$0.11**  
Print Time: **16 mins/5 pcs**



**C&B A2**

Night Guard  
Cost Per Part: **\$4.97**  
Print Time: **59 mins/9 pcs**



**Night Guard**

Denture Base  
Cost Per Part: **\$9.51**  
Print Time: **46 mins/4 pcs**



**Denture Base**

## Validated Third-party Resin Partners

Validated by various resin suppliers, providing advanced certifications for Class II and III dental applications.



# Reviews from Professionals



**Dr. Melissa Shotell, DMD, MS** 🇺🇸

- Board-Certified Orthodontist  
- Orthodontic Consultant at Sonora Modern Dentistry & Orthodontics

### The print speed is amazing!

“ Live printing of 6 arches in 5 minutes. I had them run the demo for me and it was incredible to see 6 arches print so fast! Uniz is also verified for direct printing aligners when Graphy resin. It is going to be great to see how the speed of this technology can work for same day starts! ”



**Dr. Kenji Ojima** 🇯🇵

- President of JAPAN Academy of Aligner Orthodontics  
- KOL DSD/Aligner

### The most fastest 3D printer!

“ Thank you to Graphy and Uniz team today we start to manufacture about Shape memory Aligner from the most fastest 3D printer “UNIZ NBEE”. ”



**Dr. Björn Ludwig & Dr. Christian Sander** 🇩🇪

- Assistant Professor at the University of Homburg / Saar, Department of Orthodontics.  
- The editor in chief of the Quintessenz publication “Kieferorthopädie” (Orthodontics).

### NBEE is the winner in matter of speed

“ I guess the NBEE is the winner in matter of speed, and my expert on this = Christian, as well. ”



**Dr. Christian Brenes** 🇺🇸

- USA Top100 doctors 2022  
- Professor at Medical University of South Carolina  
- Founder of Digital Dentistry Education

### NBEE meets dental practice's need

“ After a few months of using the NBEE 3D printer by Uniz; here are some of the key points of the evaluation; the complete eval will be in the online course.

1. Very easy to use hardware and software. Huge build plate to fit about 5-6 models horizontally and about 24 vertically.
2. The printer is big but is very fast, faster than slash.
3. The surface finish is quite good compare to many other printers.
4. More ideal for labs due to its size; more limited resins but the company is incorporating many resins in the next few months- open architecture is my thing.
5. Truly plug and play with built in Wi-Fi or Ethernet.
6. Built in touch screen and heater. ”

# Trusted by Digital Dentistry Leaders

We are maintaining and extending trusting relationships with our partners worldwide, and focusing on providing most efficient solutions and best quality.



.....