

BENDARC[®]

World's 1st Chairside Finishing Archwire Bending Robot





BENDARC[®]

Revolutionize Orthodontic Finish:
Finishing Archwire Bending Robot

Physical Specifications

Dimensions 422 x 303 x 480mm
(17 x 12 x 19 inch)
Net weight 31kg (68.3lbs)

01. Precision-Controlled Tooth Movement

BENDARC[®] ensures exact tooth positioning with customized adjustments for each patient's unique orthodontic needs.

02. Predictable Activation

BENDARC[®] offers consistent performance without unexpected activations, streamlining the orthodontic treatment process.

03. Simplification of Complex Adjustments

BENDARC[®] turns intricate orthodontic adjustments into straightforward tasks, enhancing treatment efficiency and precision.

In-Office Process: 6 Steps



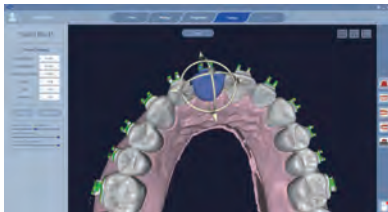
Scanning



Merging



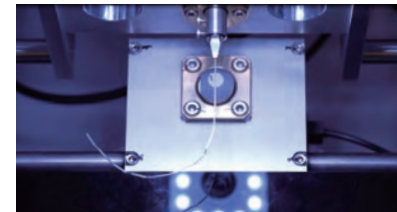
Segmentation



Setup



Wire Path Generation

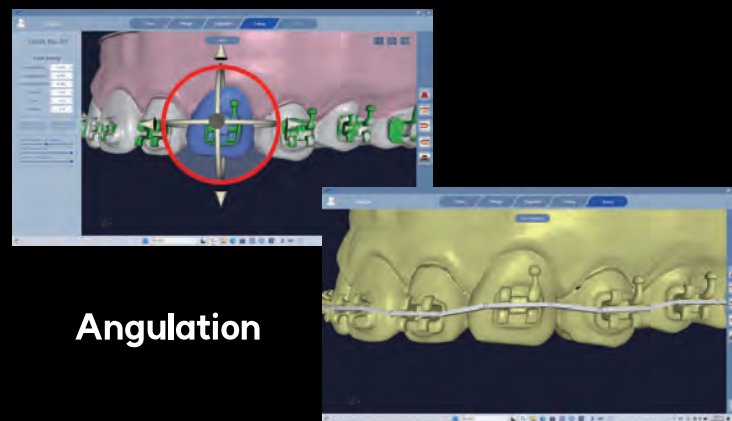
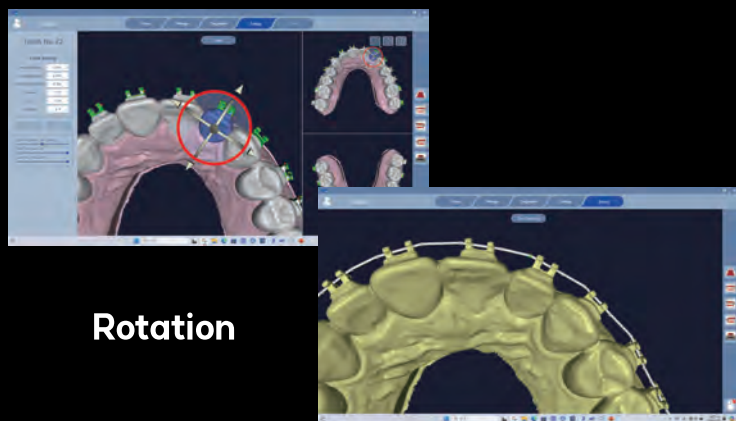
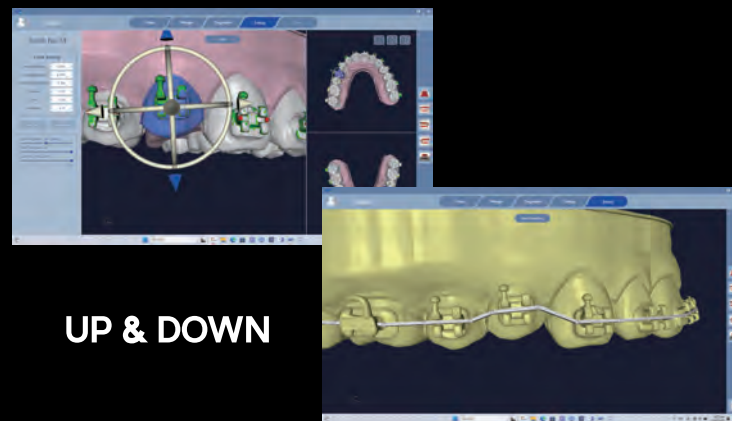
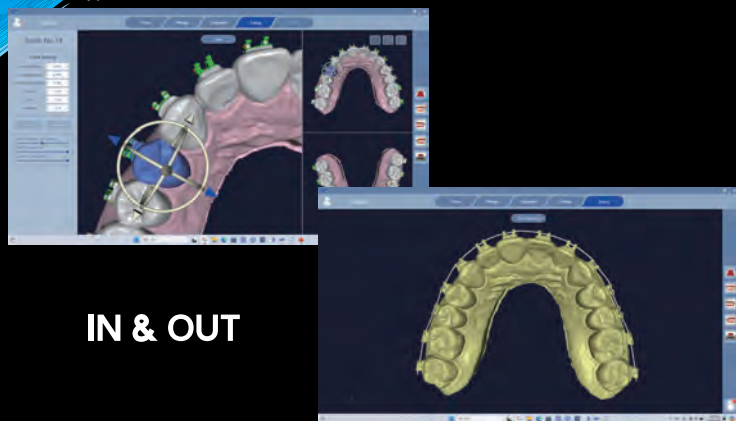


Robot Bending

“ Wire bending for precision-controlled tooth movement ”



Finishing Archwire Design Program





Why choose BENDARC® ?

◆ Streamlined User Interface

Designed with simplicity in mind, **ARC** allows orthodontists to navigate through the design process effortlessly, completing setups in under 10 minutes. This streamlined approach not only saves valuable time but also enhances the focus on delivering patient-centric care.

◆ Precision-Engineered Archwire Adjustments

Leveraging cutting-edge technology, **BENDARC®** sets a new standard for precision in archwire bending. Each adjustment is executed with pinpoint accuracy, ensuring perfect alignment with the personalized treatment plan, and paving the way for superior treatment outcomes.

◆ Optimized Treatment Efficiency

BENDARC® revolutionizes the orthodontic workflow by infusing efficiency at every step – from the initial setup to the final adjustments. It dramatically accelerates the treatment process, yielding faster results without compromising on quality, thereby elevating both patient satisfaction and practice productivity.



YOAT Corporation 19105 36th Ave W Suite 209, Lynnwood, WA 98036
T. +1 (425) 967-6165 **E.** sales@yoatcorp.com **W.** www.yoatcorp.com